

C R O M A T U R E



Tecnologia conosciuta in cui vantiamo enorme esperienza (1912), dove le varie esigenze dei clienti ci hanno portato a sviluppare, tra le altre tecnologie, il sistema PWB (stratificazione del riporto di cromo per l'impermeabilità dello strato applicato).

Applicazioni nei settori:

C a r t a r i o

S i d e r u r g i c o

C h i m i c o

M e c c a n i c o

A u t o m o b i l i s t i c o

P e t r o l c h i m i c o (v a l v o l e)

This is a known technology in which we have the advantage of exceptionally long experience (since 1912). The needs of our clients prompted us to develop among other technologies, the PWB system, consisting of stratification of the chrome coating to achieve impermeability of the layer applied.

This technology is used in the following fields:

P a p e r m i l l s

S t e e l m i l l s

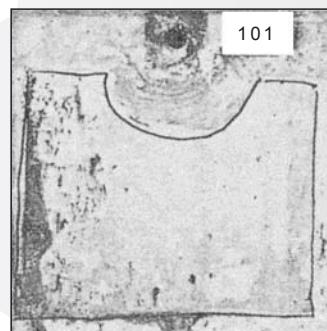
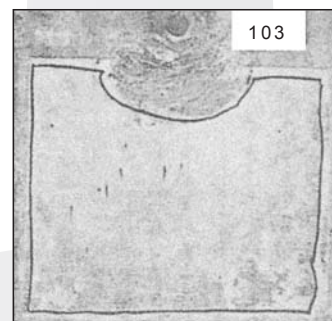
C h e m i c a l p l a n t s

M e c h a n i c a l i n d u s t r i e s

T h e a u t o m o b i l e i n d u s t r y

P e t r o c h e m i c a l i n d u s t r i e s (v a l v e s)

Due provini esposti in nebbia salina, il n° 103 (cromato ad onde pulsanti sp. 0,04) primi segni di usura dopo 128 h il n° 101 dopo 65 h. usura completa (cromatura normale sp. 0,1 mm).



Two test pieces exposed to saline mist. N° 103 (pulsing wave chromium plating, 0,04 thickness) showed the first signs of wear after 128 hours. N° 101 was completely worn after 65 hours (normal chromium plating 0,1 mm thickness).

Cromatura tavola di rullo per cartiere.



Roller chromium plated for paper mills.

**Cromature Baratti
Coatings & Service**
Via Padova, 7
25125 Brescia • Italy
Tel 030 3540416
Fax 030 3541668
www.barattiservice.com
info@barattiservice.com